



VDOT Infrared Bridge Deck Scanning

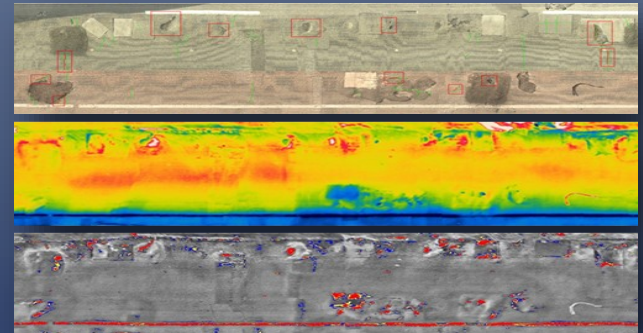
SUMMARY

	Insignificant	Moderate	Severe
Crack Size	< 1/16"	1/16" to 1/4"	>1/4"

In 2012, NEXCO West-USA worked with VDOT on a pilot project for the usage of infrared scanning. The purpose was to get a crack map of the I-64 Shockoe Valley bridge's deck (Eastbound right lane) to provide ranks of distresses.

The ranking of distresses provided information of symptoms such as patched concrete internal delamination or partial delamination. In addition, each distress would be given a recommended action such as immediate repair or monitoring hammer sounding chain drag.

Bridge owners can use this information to prioritize the bridge deck repair and/or rehabilitation program and efficiently allocate its limited budget to obtain the maximum return on investment for network level bridge management.



OVERVIEW

Client: VDOT

Contact info: Mr. Claude S. Napier, Jr
(804-786-2853)

Contract amount: Experimental project

Quantity: The total length of bridges is 1,473 ft.

Project period: Nov. 2012



NEXCO - West USA
8300 Boone Blvd. Suite 260
Vienna, VA 22182

+1 (703) 734 - 0281
info@w-nexco-usa.com
www.w-nexco-usa.com