

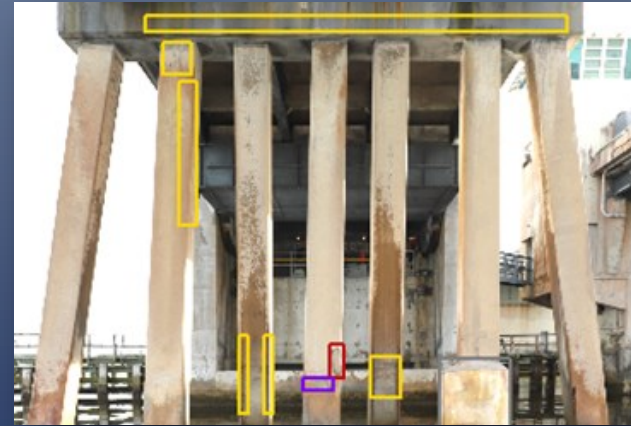


Kennedy Space Center (NASA) Bridge Inspection, Florida

SUMMARY

NEXCO and the University of Central Florida (UCF) collaboratively evaluated two target bridge structures managed by the National Aeronautics and Space Administration (NASA) at Kennedy Space Center (KSC). The bridges carry NASA Causeway over the Indian River. With the implementation of rapid scanning NDE technology, the surface area of deficient findings was mapped and quantified.

Our deck scanning system, DTSS, was used to scan the deck top surface, while our universal scanning system, U3S, was used to scan the soffit, girders, and bents. The field team completes the pilot project within a few days' time. Data captured by boat can result in blurred or low-quality imagery, but our system can compensate for this and still yield excellent resolution for crack mapping.



OVERVIEW

Clients:

University of Central Florida

Contact info:

Dr. Necati Catbas
catbas@ucf.edu

Contract amount:

Total budget : \$50,000

Quantity:

Deck length of 2,993 ft., 2 bridges

Project period:

Jan. 2021



NEXCO - West USA

8300 Boone Blvd. Suite 260

Vienna, VA 22182

+1 (703) 734 - 0281

info@w-nexco-usa.com

www.w-nexco-usa.com