



WMATA Viaduct Crack Mapping

SUMMARY

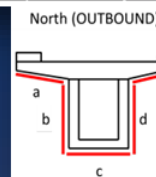
In 2015, NEXCO performed a bridge inspection using their surface imaging system at the Bush Hill Viaduct owned by the Washington Metropolitan Area Transit Authority (WMATA). The objective was to deliver a deficiency map for both girders and piers, as well as a cracks and deficiency summary for each pier.

The surface defects were identified in the deficiency maps with its dimensions, as well as in a spreadsheet format and illustrated in a graphical manner. The information on surface deficiencies can easily be stored both physically and digitally; allowing it to be referenced for future monitoring, repair, and rehabilitation.

With NEXCO's technology, the concrete was able to be safely evaluated in many locations that are very difficult to access. This project was an objective assessment that can contribute to making better cost-effective decisions for safety and serviceability of the bridge.



FACE	(North Girder) Crack summary			Total Crack Length
	Narrow (-1/16")	Medium (1/16"-1/8")	Wide (1/8")	
NORTH OVERHANG	63	0	0	63
NORTH WEB	53	0	0	53
BOTTOM	125	0	0	125
SOUTH WEB	13	0	0	13
SOUTH OVERHANG	63	0	0	63
Total	317	0	0	317



IN/OUTBOUND	Faces
NORTH (OUTBOUND)	a NORTH OVERHANG
	b NORTH WEB
	c BOTTOM
	d SOUTH WEB
	e SOUTH OVERHANG

OVERVIEW

Client:

WMATA
Gannett Fleming Parsons

Contact info:

Mr. Eric R. Krist c/o WMATA
erkrist@wmata.com
(202-637-7000)

Mr. David G. Burrows c/o Gannett Fleming Parsons
dburrows@gfnet.com
(202-969-3178)

Contract amount:

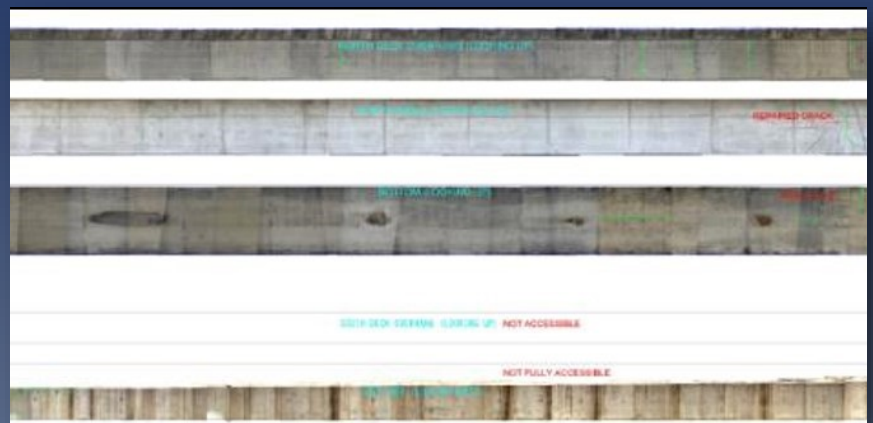
\$ 10,000-\$15,000

Quantity:

The total length of bridges is
965 ft.

Project period:

Nov. 2015



NEXCO - West USA

8300 Boone Blvd. Suite 260

Vienna, VA 22182

+1 (703) 734 - 0281

info@w-nexco-usa.com

www.w-nexco-usa.com