

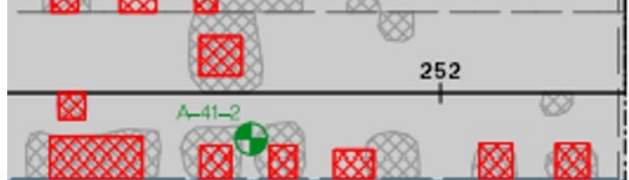
Complex Bridge Scanning



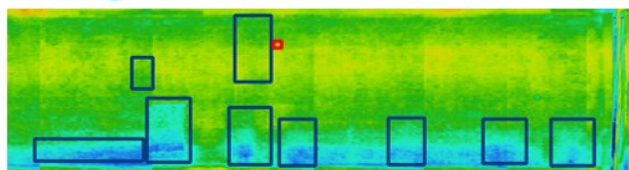
Mobile NDE scanning across bridges that have extremely long surface areas can become extremely costly to inspect, for owners, consultants, and the public at large. Setting up lane closures on these structures also come with significant repercussions.

Instead of scheduling lane closure after lane closure, week after week, NEXCO obtained HD imagery, IRT, and GPR data to analyze a large bridge in a single field day. Processing and analysis of the data took about three weeks post-collection, resulting in a detailed report on delamination and other sub-surface findings. After comparison to the findings of recent HOI reports, the detection capability was deemed highly successful.

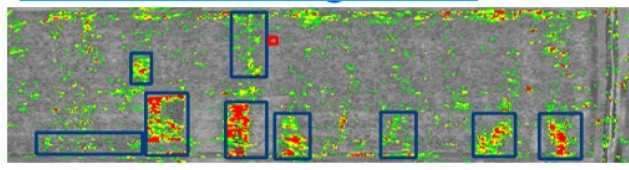
Previous inspection



IR nighttime



IR Processed nighttime



Project Details

Client	Maryland Agency
Reference	Withheld
Surface Area	1 Bridge, 768,368ft ²
Project Period	9/2021-10/2021

Impression

Situations where the target area is monstrous and lane closures are difficult are where systems like our Deck Top Scanning System (DTSS) really shine, and the client agency very much appreciated the fact that traffic flow was not disrupted by the scanning procedure, which took place at regular posted speed limits.