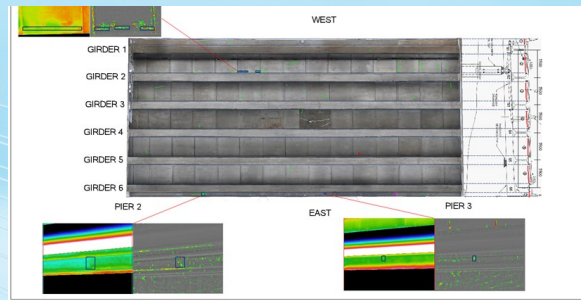


Our Virginia-based inspection team flew to British Columbia, Canada to perform comprehensive scanning of two target bridge decks and underside using hand-held and cart-mounted imaging systems.

The data was processed using automated, photogrammetric stitching. Analysts reviewed the target surfaces to locate cracks, spalls, patches, and sub-surface delamination.

The data was later compared to hands-on inspection results and was found to be highly correlative, even adding to what the HOI inspections could not catch.



Project Details

Client	Withheld
Reference	Ryo Muraki R.muraki@mitsui.com
Surface Area	2 Bridges, 50,000ft ²
Project Period	6/2022

Impression

The project demonstrated how powerful compact sensors can be, even when they are packed and flown on a plane to a distant site. High definition can be used to generate powerful reports because of how much detail is stored in a high-resolution image.

Furthermore, deliverables can be used to generate either 2D plan/elevation view maps, or a 3D model.