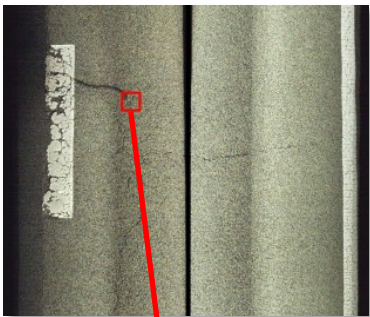
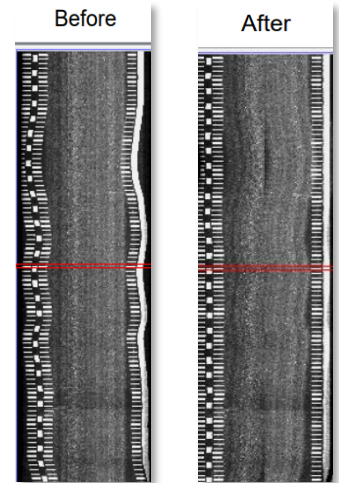
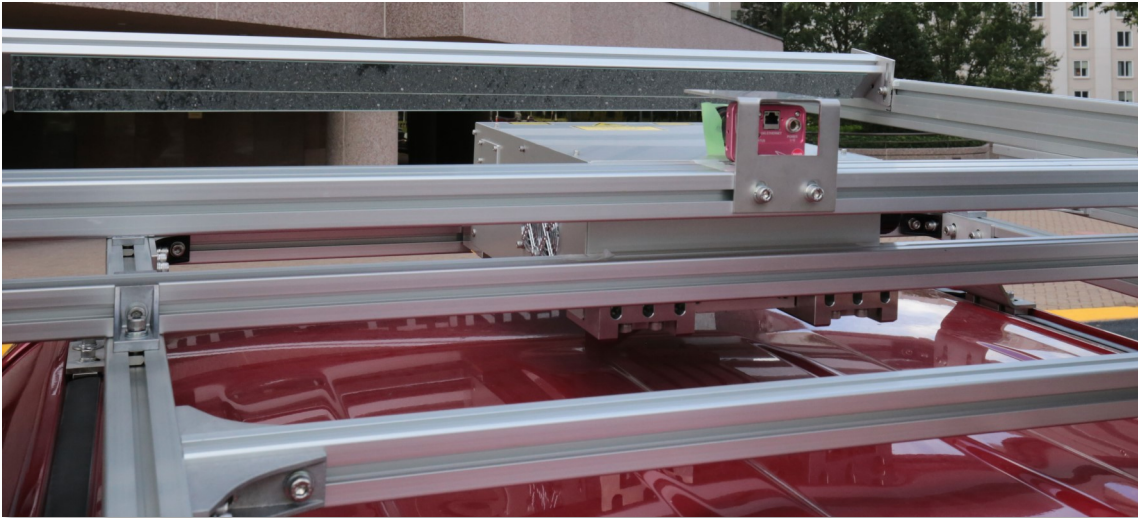


## SmartEAGLE - Asphalt Pavement Scanning System



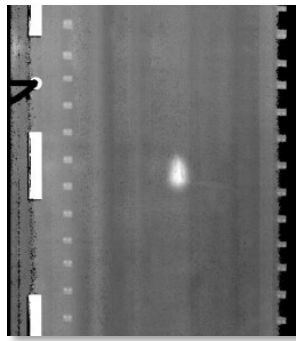
### What does SmartEAGLE do?

The **SmartEAGLE** is an advanced Roadway scanning vehicle that is equipped with a 3D laser mapping system, line camera, and a line sensor to detect cracks along the road. Able to record georeferenced 3D, visual, and infrared (IR) data at highway speeds, it is the ultimate crack-detection machine.

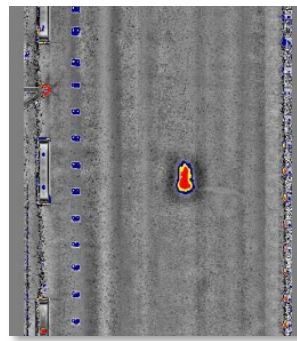




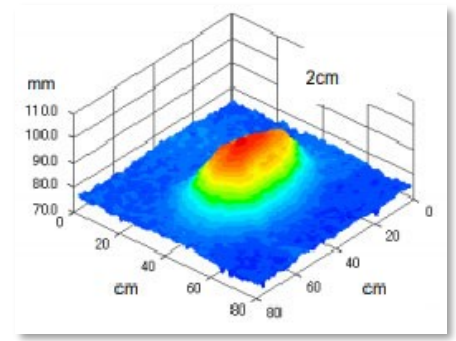
Visual



Elevation



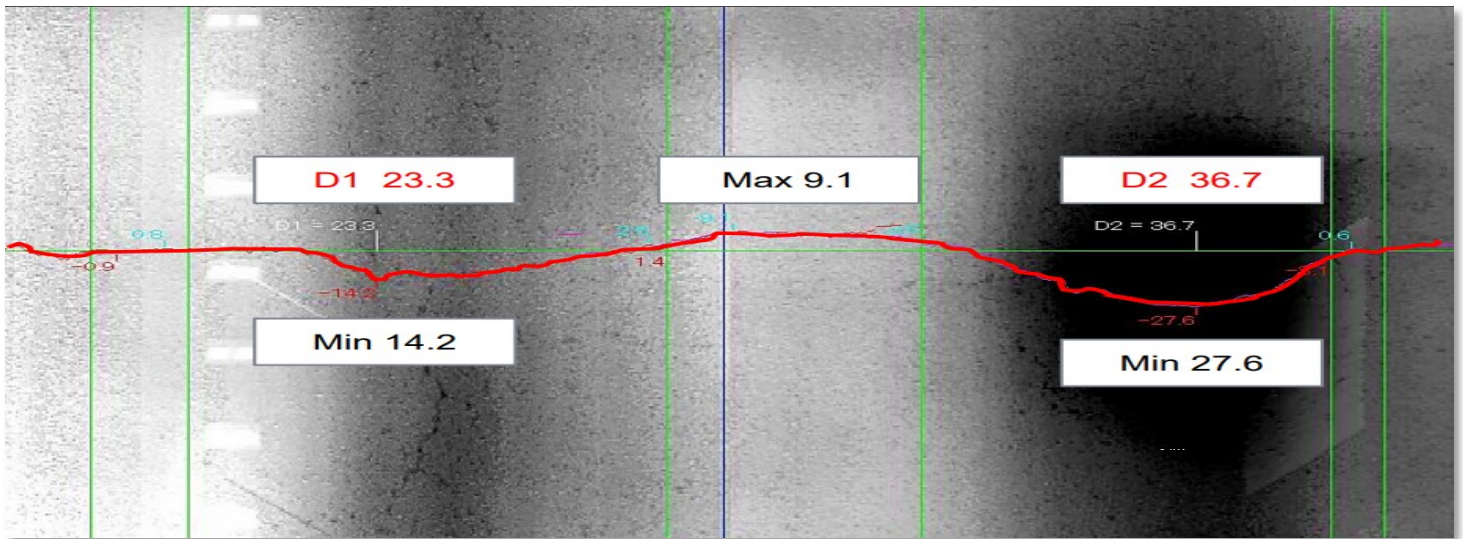
Auto-Analysis



Blistering Detection

## Benefits of using SmartEAGLE

The **SmartEAGLE** does not require lane closures during inspection. It is able to record/detect cracks in color at a 1 mm<sup>2</sup>/pixel resolution at 50 mph (80 km/hr) operating speeds. The scans cover an entire lane, and rutting can be measured at 10x2 mm at 50 mph or at 80 km/hr. The system is international, able to adapt to both milepost and kilopost units.



Rutting Measurement

## Accreditations

The **SmartEAGLE** uses the International Roughness Index (IRI), which has been developed by the United States National Cooperative Highway Research Program (NCHRP) and the World Bank. IRI is the most extensive roughness index used worldwide, and is required by the U.S. Federal Highway Administration (FHA).

+1 (703) 734 - 0281  
info@w-nexco-usa.com  
www.w-nexco-usa.com

NEXCO - West USA  
8300 Boone Blvd. Suite 260  
Vienna, VA 22182

