

Universal Surface Scanning System (U3S)



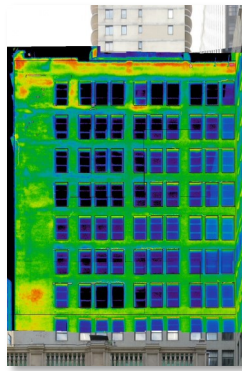
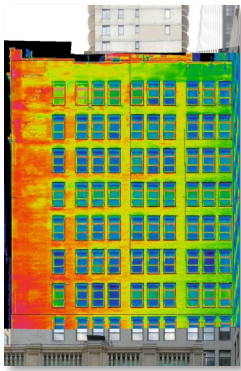
What is U3S?

U3S includes a combination of visual cameras and infrared cameras to suit various site applications. It focuses on obtaining high-definition data to find cracking, spalling, delamination, leakage, and more.

With adaptive sets of lenses and mounting mechanisms, the system can be used at 0-250ft away from a target surface and maintain a resolution of $0.5\text{mm}^2=1$ pixel. At 500ft, it can still yield $1\text{mm}^2=1$ pixel. This means $>0.2\text{mm}$ crack widths can be detected and mapped from safe locations around the target structure.

Benefits of Using U3S

Instead of setting up expensive and time-consuming lane closures, we recommend the use of **U3S** to fully scan the surfaces and map out deficiencies first. That way, only areas of concern can be focused on during hands-on inspections.

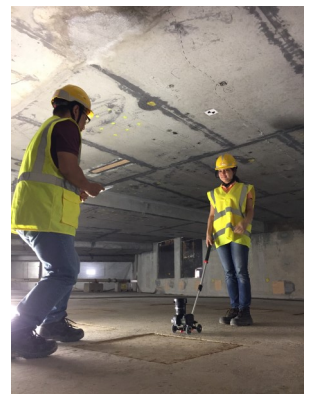


Past Applications

“The U3S system was used to image an entire bridge from the inside-out. It was mounted on boats to capture the soffit, carried into box girders, and stationed on a parallel roadway to capture the parapets.



The U3S system was used to image the inside of a highly trafficked station in Washington, DC. It captured leakage and spalling along the station’s surfaces.



+1 (703) 734 - 0281
info@w-nexco-usa.com
www.w-nexco-usa.com

NEXCO - West USA
8300 Boone Blvd. Suite 260
Vienna, VA 22182

